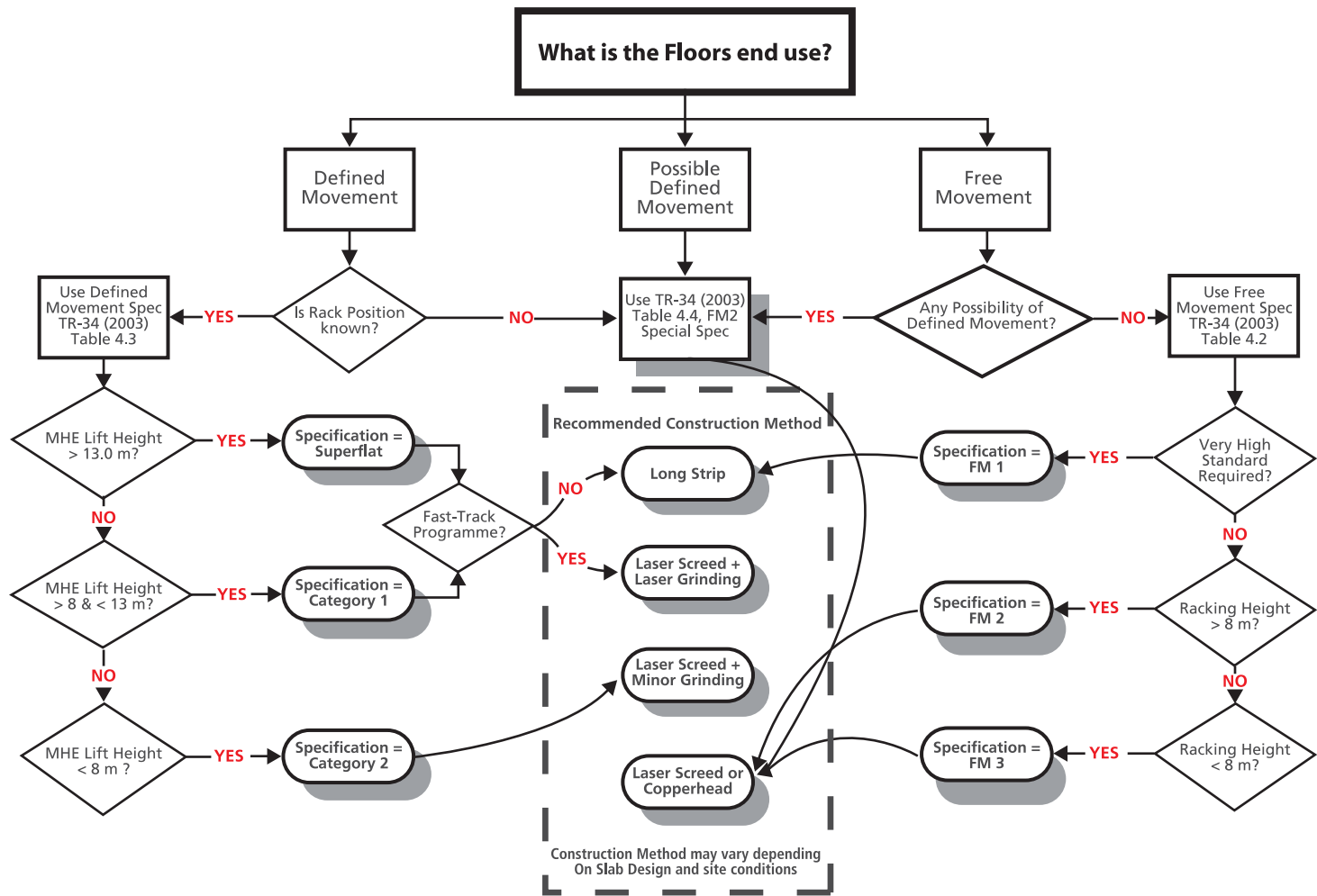


Which Floor Flatness Specification and Construction Method should I apply?



The CoGri Group today and moving forward

Since 1993, CoGri in Asia has constructed and upgraded warehouse floors in Korea, China, Vietnam, Thailand, Taiwan, Malaysia, Singapore, Philippines, Australia, and The Middle East.

There are now 14 Laser Grinders operating from UK, Mainland Europe, U.S, Middle East, Singapore and Korea.

The CoGri Group is rapidly expanding and will continue to bring innovation to the industrial flooring market and provide the highest quality services to its clients using the most modern technologies and solutions.



www.cogriasia.com

South East Asia Regional Headquarters
1 Fifth Avenue
#04-04/05
Guthrie House
Singapore 268802

Tel: +65 6500 4670
Fax: +65 6500 4675
Email: info@cogriasia.com
Website: www.cogriasia.com

Specialists in Concrete Flooring





>>The CoGri **'Large Pour'** Flooring Solutions



LP-SOG (Large Pour Slab on Grade)

Where reasonable soil exists, a nominally reinforced S.O.G provides the most cost effective Concrete Flooring Solution. To minimize risk of cracking, Drying Shrinkage is controlled by carefully designed layout and installation of Induced and Formed Joints. Secondary reinforcement is provided by light Steel Fabric or 20 to 30 Kg/m of Steel Fibres.

Using the CoGri S-240 Laser Screed, up to 2,000 m² of high quality concrete flooring can be placed and Power Trowelled to a durable Burnished Finish each day. With the CoGri emphasis on high standards of Quality Control, Large Pour floors can be constructed to tolerances of TR-34 FM2 Special and Abrasion Resistance of BS 8204 AR Special – without the need for liquid hardeners or Dry Shakes Toppings.



JF-SOG (Joint Free Slab on Grade)

The Joint Free S.O.G is our premium flooring solution for clients who want maximum durability with the minimum number of joints for lower long term maintenance costs. Using 35 to 45Kg/m³ of Steel Fibres, the width and distribution of shrinkage cracks can be controlled to eliminate Saw Cuts thereby providing Joint Free floor areas of up to 2,000 m².

With the CoGri Joint Free S.O.G you can reduce the risk of defects such as Curling and loss of load transfer at joints – perfect for floors with very heavy loads or requiring very high tolerances. To suppress fibres at the surface a Dry Shake Topping is recommended with application by automated topping spreader. A truly functional and low maintenance flooring solution!



SR-SOP (Steel Fiber Reinforced Slab on Piles)

When you have poor soil but want the benefits of a Laser Screed floor, a Steel Fibre Reinforced S.O.P is the solution for you. Using heavy dosages of high tensile strength (1,475 N/mm²) Steel Fibres made in Europe and a pile grid from 3.0 x 3.0 to 5.0 x 5.0 m, NO reinforcement bars are required.

The design is based on full scale testing and the solution has been successfully utilised globally since the early 1990's. CoGri can provide the Client 'Peace of Mind' with a total Design and Build solution incorporating independent P.E Endorsement backed up by a substantial design indemnity insurance policy. Choose the CoGri S.O.P for a safe and modern Fastrack flooring solution for weak soil.

>>The CoGri **'Superflat'** Flooring Solutions



SF-LG (Superflat Laser Grinding)

Converting an existing warehouse to narrow aisle or need to upgrade a new floor that doesn't meet specification? Grind it right! First Time! The patented Laser Grinder® is a proven solution and guaranteed to deliver a specification compliant floor. Grinding is a one time investment unlike overlays and toppings. Floors upgraded by laser grinding are not subject to cosmetic damage, delamination, or blisters. Only one aisle is required at a time and upon completion of grinding the floor is ready for immediate service. The Laser Grinder® can provide economical wheel track or whole aisle width solutions for maximum flexibility.

When considering floor grinding, beware of the consequences of accepting imitations. CoGri Group pioneered VNA floor grinding technology and have upgraded more than 25,000 meters of aisles in Asia since 1993!



SF-FT (Superflat Fast-Track Cast-Grind)

Tight program, big floor, very high tolerance? Consider our unique combination of high output Laser Screed floor construction and Laser Grinding. No other flooring contractor can offer this service.

To construct floors to Very High Tolerances takes precious time. The CoGri Superflat Fastrack cast-grind solution takes the flooring works off the critical path. As soon as the roof and walls are in we construct 1,500m² of FM2 ground supported floor per day masking short work of big floor areas. The overhead services and racking can be installed while the aisles are being ground to tolerance with our patent system. Our cast-grind solution can shave weeks off the building program.



SF-LS (Superflat Long Strip)

Long Strip is the conventional methodology for constructing TR34 Superflat or ASTM E1155 Fmin 100 direct finish concrete floors for Very Narrow Aisle (VNA) Warehouse applications. Without substantial remedial work no other construction method can be used to achieve the precise tolerances of longstrip. When you want the highest quality floor for defined traffic floors choose CoGri longstrip – a proven solution with no Risk!

>>The CoGri **'Special'** Flooring Solutions



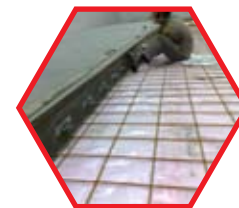
TP-FS (Topping Slab Floor System)

When design and programme do not allow construction of the structural slab to tolerance or when extensive upgrading is required our topping slab is the solution. Constructed with full mechanical bond or unbonded; starting at 75mm thick these slabs are finished to tolerance for Free Movement or VNA applications. Check our reference to see what global companies are using CoGri Topping Slabs.



PS-FS (Pump Screed Floor System)

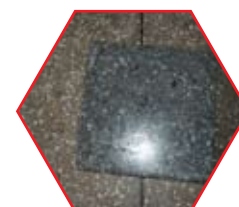
The ideal solution for time critical upgrading of workshop, factory and general warehouse floors. The finished screed is durable, tough and abrasion resistant. Placed at a minimum thickness of 7mm; up to 1,000m² of floor can be resurfaced per day. The rapid setting structural screed (30N/mm²) is ready for traffic in less than 24 hours. The CoGri screed system can be given a clear finish or sealed with epoxy in a variety of colors. When a colored sealer is selected the screed can be pigmented to closely match the coating which helps camouflage wear and tear. Pigmented screeds can also be finished with a clear sealer as an architectural solution.



CS-FS (Cold Store Floor System)

Constructing a high quality Cold Store floor for operating temperatures down to -30°C is highly specialized work. Using the experience and technical expertise of the CoGri Group, CoGri can provide a total Cold Store flooring solution including:-design, specification, planning, construction and testing.

Pre-Construction Planning is critical and detailed discussions between the Client, Architect and CoGri are required from an early stage. Special attention should be given to :- structural support, insulation type and installation, Wearing Slab detailing and Joint Sealant requirements. The Wearing Slab can be constructed to a high tolerance using the CoGri 'Copperhead' with high flotation tyres to prevent damage to the insulation.



AC-FS (Architectural Concrete Floor System)

Do you want a little something extra? Ask about the CoGri Architectural Concrete Floor Solutions. Concrete is cost effective, natural and extremely flexible; Polished Concrete, Coloured Concrete and / or Aggregates, Exposed Aggregate Finish, etchings, Stains, Coloured Dry Shakes – the possibilities are endless. Work with the CoGri Group to develop an innovative and unique decorative concrete flooring solution for your project. Now concrete really can be strong, durable and beautiful.